

Baffle



The stylish Baffle bass trap is designed to effectively attenuate low frequencies in a room space. It can be used to improve the acoustics of a space and to remove 'boomy' bass sounds. The Baffle is also ideal for spaces where acoustic panels cannot be used on the walls.

Construction

- Assembled from acoustic panels, strengthened with laminated wood supports, filled with acoustic material and upholstered.
- Dimensions 40 x 40 x 85.5 cm.
- Removable black lid 40 x 40 x 1.6 cm.
- Removable black base plinth 34.5 x 34.5 x 7 cm (5.7 cm raise).
- Can be stacked on top of each other.
- Acoustic material weight approx. 7 kg, overall weight approx. 11.8 kg.
- Maximum load weight 40 kg evenly distributed.
- Upholstered in acoustic fabric. Standard colours black, grey, red and white. Other colours also available.

Materials

- Baffle bass traps are ecologically manufactured using natural fibres (hemp and/or flax fibres) and recycled materials (recycled plastic and wood fibre).
- MDF lid and base plinth.
- Lid and base reinforced with laminated timber.
- All materials safe for indoor air quality and fire resistant.

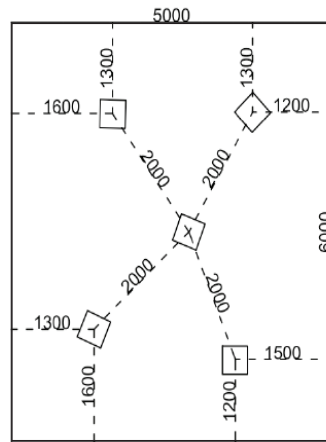


Yeseco Baffle | Acoustic Properties

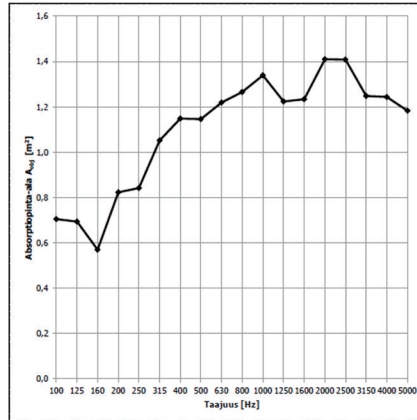
Acoustic Properties

The placement of the Baffle determines its acoustic properties. Placed in the corner, the Baffle acts as a bass trap, lowering the bass level. In the centre of the wall the Baffle attenuates evenly across all frequencies, right down to low frequencies. Away from the walls, placed nearer the centre of the space, the Baffle acts in the same way as an acoustic panel.

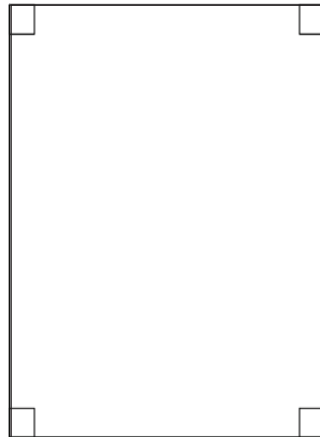
Baffles nearer the centre of the floor



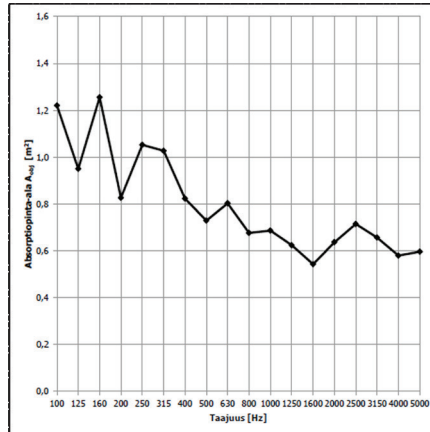
A



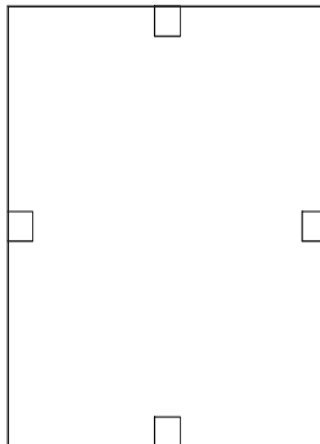
Baffles in the corners of the space



B



Baffles in the centre of the walls



C

